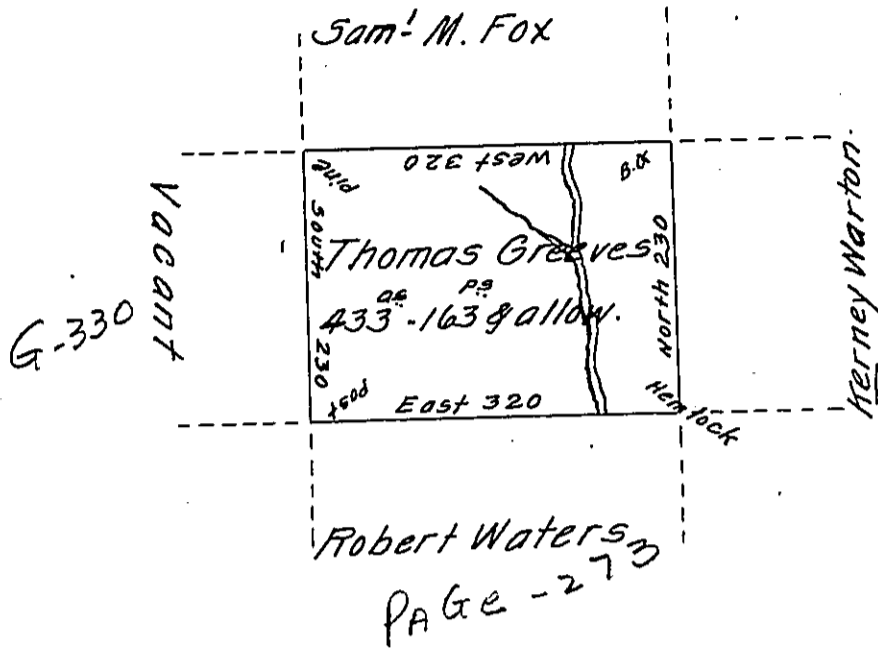


see Page 173



Situate on the Waters of Beech Creek in Bald Eagle Township
 in the County of Mifflin. Survey'd on the 18th day of August
 1794, for Thomas Greaves. by Virtue of his Warrant bearing
 date on the 29th day of Ap^l 1793. Containing Four hundred and
 thirty three acres, one hundred and sixty three perches
 and the usual allowance.

Jo. J. Wallis

D.S.

To Dan^l Brodhead Esq^r }
 Surveyor General }

IN TESTIMONY that the above is a copy of the original remaining on file in
 the Department of Internal Affairs of Pennsylvania, made
 conformably to an Act of Assembly approved the 16th day of
 February, 1833, I have hereunto set my Hand and caused
 the Seal of said Department to be affixed at Harrisburg,
 this twenty first day of February 1911.

Henry Howard
 Secretary of Internal Affairs.